

STANDARD OPTIONAL

Your Easy Gripper

Contact us to find out which Easy Gripper type and size is needed to meet your requirements



Quick Shift mounting plate (for Gripper 2160)

Ensures a quick change between forks, Easy Gripper, Easy Stacker and other accessories. Quick Shift is mounted directly on the forklift, mini-loader, telescope loader or other front loader.



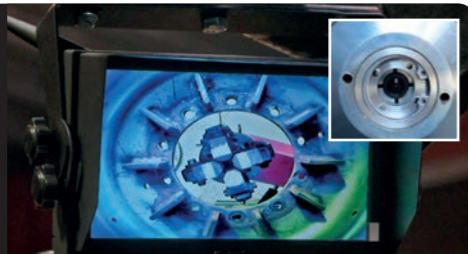
Remote Control

The compact remote control can be placed in many places in the cab. This ensures a simple and safe operation even if the forklift only has one hydraulic output for the 3 functions on the Easy Gripper 2160. The remote control has easy-to-understand symbols for the GRIP – TILT – ROTOR functions. A bright LED next to each button indicates which function is active when the one hydraulic channel on the forklift is activated.



Camera Set

Ensures good monitoring of the blind area in front of the loaded forklift. The camera provides a wide field of vision, and for night driving, the strong LED bulbs automatically light up the "blind field". The 7" high res screen ensures perfect vision. Everything is done wirelessly. The screen is prepared for 4 different cameras.



Hydraulic Quick Shift multi connection

For connecting and disconnecting the hydraulics in one easy operation



Fork Module

If you are using the Easy Gripper with your forklift, a really valuable and flexible solution is the Forkmodule. With this, you can change from fork to Easy Gripper and back to forks in just a minute or two.



Special Gripper pipes

For various purposes, special gripper pipes can be fitted on your Easy Gripper:

- Flat top gripper
- Telescopic gripper pipes
- Custom length gripper pipes



Rotating arms

For increased security, Easy grippers can be fitted with rotating arms, which automatically centers loose tyres being gripped thus ensuring all arms are holding the tyre with the right pressure.



Just Easy Tools ApS · Nupark 51, 7500 Holstebro
+45 72 344 344 · www.justeasytools.dk



Easy Gripper product range

Easy Gripper 2160 · Easy Gripper Compact · Accessories



Improve SAFETY and efficiency



Easy Gripper

We have developed the Easy Gripper range, which sets new market standards for professional processing times.

With a firm grip on the wheel or tyre an Easy Gripper can move, tilt and rotate as needed, thereby placing the wheels or tyres properly and safe on a hub, on a tyre changer, on a truck (when loading) or on a stock shelf. Also facilitates the removal of rainwater in tyres that are kept outdoors.

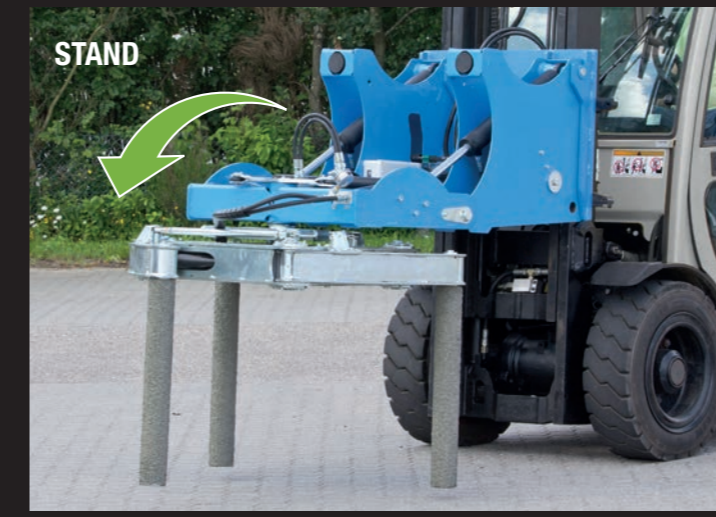
The Easy Grippers eliminates unnecessary heavy physical work and the associated risk of both accidents and strain injuries.

*Saves time!
Improves safety!*

Easy Gripper 2160 as attachment to forklifts or loaders



Easy Gripper Compact. Designed for loaders



DISTRIBUTORS



SERVICE



MINING



AGRICULTURE



HARBOUR



Easy Gripper

The Easy Grippers are a range of tools designed to help the tyre professionals in a multitude of situations. Working faster, holding tyres safer, avoiding dangerous situations, saving time, less damages to tyres, rims and vehicles. These are just some of the benefits our customers report after using the Easy Grippers.

No matter if it is tyre producers, distributors, retreaders, tyre service organisations, farmers or vehicle factories. All know the difficulties of handling large tyres without the proper tools.

The Easy Grippers can handle many different tyre sizes – and can be installed on forklifts or loaders.

Safety

Professionals protect themselves against potential injury risks by using appropriate tools.

Technical Data:

- Lifting capacity: 1.000 kg (2.200 lbs)
- Gripping diameter: 1.200 – 2.160 mm (47,3 – 85 inches)
- Tyre width with standard gripper pipes: 1.000 mm (40 inches)
- Longer gripper pipes and telescopic gripper pipes can be acquired as accessories
- As standard includes 3 gripper pipes: 89 x 600 mm (3,5 x 23,6 inches)
- Supply voltage: 12 V (24 V by order)
- Hydraulic requirement: minimum 100 bar (flow 70 l/min)
- One double-acting hydraulic connection
- Remote control included to operate the 2 or 3 functions (Gripper Compact has no tilt function. Is therefore suited for use on a loader with tilt function).
- Lifting height depends on forklift/loader
- Horizontal/vertical tilt movement: 0 – 90 degrees (Gripper 2160)
- Rotation: 0 – 50 degrees
- Quick shift between Gripper and forks
- Net weight Gripper 2160: 550 kg (about 1.200 lbs)
- Net weight Gripper Compact: 400 kg (about 1.100 lbs)
- Transport dimensions 1.200 x 1.000 mm, height 1200 mm (47 inches)

